

8600



"8600" SERIES



VIDEO INSPECTION SYSTEM

- High resolution zoom optics
- Electronic crosshair
- Large 4" x 8" and 4" x 12" stage travel
- "Z" axis available
- "60 years" manufacturing experience in USA
- Optional CNC Control

S-T  **INDUSTRIES, INC.**
SCHERR - TUMICO

*See the
Quality*

“8600” SERIES VIDEO INSPECTION SYSTEM The “8600” Series Video Inspection System from S-T Industries is the perfect alternative to the Optical Comparator. High Magnification, precision zoom optics provide a superior image with a 4” x 8” or 4” x 12” travel stage, available with 3 readout systems, cross hair generator or video edge detection, and manual or CNC 2-axis or 3-axis systems for greater flexibility. Combined with over 60 years of manufacturing experience in the U.S. makes S-T Video Inspection Systems your best buy.

CNC models available with auto-Z-axis positioning or fully automatic-Z-focus and programmable lighting

High resolution 30x to 180x Zoom optics color camera and monitor

Sub stage and ring light fiber optics surface illumination

Large 4” x 8” or 4” x 12” travel stage with .00005”/.001mm precision glass scales.

Shown above
Model 20-8600-02

State of the art electronics, choice of 3 Dro's with RS232C output and available with geometric functions and video edge detection



Digital cross hair generator 20-8610 is standard with the 8600 series video inspection system. The cross hair generator has 3 modes of operation - black, white and auto. In auto mode, the line will change from black to white or white to black as center crosses an edge. Three settings for line type - solid, dashed or dashed with center point - **an S-T exclusive.**

20-8610 Digital Cross hair generator



DIGITAL READOUTS



STANDARD DIGITAL READOUT ST 7000

The Standard digital readout features absolute/incremental, IN/MM conversion, random zeroing, RS232C output and linear error compensation.



Quadra-Chek 221 and 221E

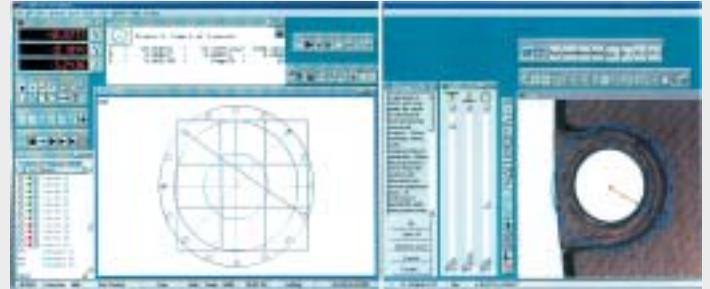
These powerful digital readouts provide fast geometric computations in a simple, easy to use format. Functions include point, line, circle, distance, angle, skew alignment and Measure Magic. Other features include Inch/MM, Cartesian/Polar, nearest/farthest distance, complimentary angles, serial and parallel ports and 200-feature memory. Large, high contrast LCD screen graphically displays measurement features and construction. Housing tilts backward or forward for best angle of operation. Model 221E includes fiber optic edge sensor.



QUADRA-CHEK 4200

PC computer based geometric readout system, mouse driven, with on screen graphic representation of part or part segment as it is measured. Simple CAD interface simplifies

constructions and part programming. Unlimited part and feature memory. Includes computer with Microsoft® Windows®.



Quadra-Chek 5000

New 3-Axis CNC color, auto focus, programmable lighting, PC computer based geometric readout system, mouse driven, with on screen graphic representation of part or part segment as it is measured. Simple CAD interface simplifies constructions and part programming. Unlimited part and feature memory. Includes computer with Microsoft® Windows®, and all functions found in the Quadra-Chek 4200.

DIGITAL READOUT SYSTEM FOR VIDEO EDGE DETECTION AND CNC MODELS

Includes QUADRA-CHEK 4200 OR 5000 with the following mouse controlled measuring probes:

Probes Include:

CIRCLE / ARC PROBE

This point coordinate sensing probe is used in finding the diameter and center X and Y coordinates of a Circle or Arc. Also used as one of the principle probes for calibration.



FARTHEST PROBE

A box probe used in finding the farthest X and Y coordinates of an edge from the direction of the arrow.



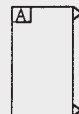
SIMPLE PROBE

A single line probe used in finding a single point. This probe is also used as the other principle probe for calibration.



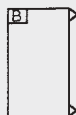
AVERAGE PROBE

This is also a box probe used in finding the average X and Y coordinates of a poorly defined edge.



BUFFER PROBE

This box tool is used in finding a defined number of X/Y coordinates of an edge. The number of points it will deliver to the QC-4000 is defined by the **Tool Config** function. This allows the operator to probe up to 100 points.



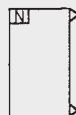
CROSS HAIR PROBE (MANUAL CURSOR)

This is the only probe that is not an edge detection probe. It is used simply to stake a point, and send the X, Y coordinates to the QC-4000. When increased to full screen size, it eliminates the necessity of a cross hair generator.



NEAREST PROBE

A box tool used in finding the nearest X and Y coordinates of an edge from the direction of the arrow.



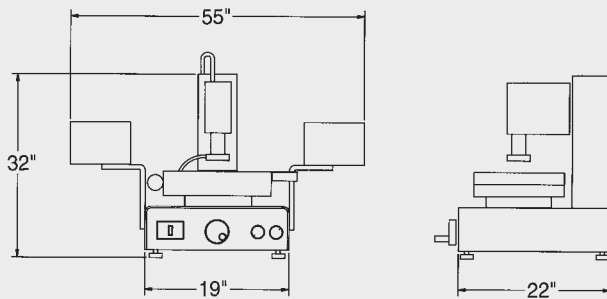
8600

"8600" SERIES VIDEO INSPECTION SYSTEMS



CATALOG NO.	DESCRIPTION
20-8600-01	Video System w/ST-7000DRO and Crosshair
20-8600-02	Video System w/QC-220DRO and Crosshair
20-8600-04	Video System w/QC-4200DRO and Crosshair
20-8800-00	CNC System w/QC-5000DRO and Color VED

SPECIFICATIONS



Work Table: 10" x 14" or 10" x 18" - Black Anodized

Measuring Range: (X)-8" (Y)-4" (Z)-5" or
(X)-12" (Y)-4" (Z)-5"

Allowable Work Load: 25 lbs.

Illumination: Profile - 100W-12V
Surface - 100W-12V

Magnification Lens: 30-180X Zoom

Electrical: 100-240 V, 50/60 Hz Compatible

Weight: Manual 180 lbs. Crated 215 lbs.
CNC 240 lbs. Crated 285 lbs.

All S-T Industries Optical Comparators and Video Inspection systems include a two year warranty on parts and labor, installation and training at your facility and a certificate to NIST. There are no additional hidden costs for this service.

THE S-T FAMILY OF OPTICAL COMPARATORS

14" HORIZONTAL

30"

14" VERTICAL

16" HORIZONTAL



20-3500



20-3700



20-5600



20-4600



20-1600

CALL OR WRITE TODAY FOR FREE INFORMATION ON ANY OF THE ABOVE

ST INDUSTRIES, INC.

Manufacturers of SCHERR-TUMICO Precision Measuring Tools
301 Armstrong Boulevard North
St. James, Minnesota 56081-0517
Phone: 1-800-326-2039 • (507) 375-3211
FAX 507-375-4503
E-Mail: sales@stindustries.com
Internet: www.stindustries.thomasregister.com
stindustries.com



International Operations

SCHERR-TUMICO optical comparators and video inspection systems are available throughout the industrialized world. S-T Industries maintains a service and distribution network with factory qualified sales and service representatives in the following countries. Call or write for your representative.

Australia	Holland	Malaysia	South America	Turkey
Greece	Italy	South Africa	Thailand	Denmark
Israel	Singapore	Taiwan	Great Britain	Philippines
Norway	Sweden	Germany	Indonesia	
Spain	France	India	New Zealand	
Canada	Hong Kong	Mexico	South Korea	